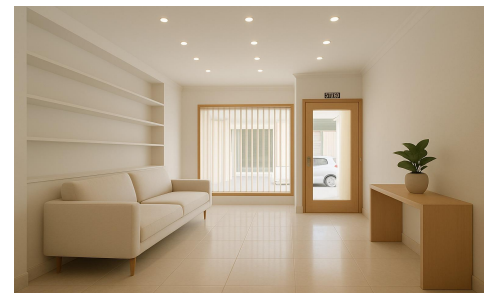




SPS30610G

Commercial in Arta

€700,000



0



1



368m²



816m²



N/A

Investment Opportunity! . Located in the heart of Artã , just steps away from the old train station, this unique property combines functionality, space, and outstanding potential. Set in a peaceful, easily accessible area and part of a building with only one neighbor, it offers privacy and comfort for any commercial or industrial activity you wish to undertake. . The property consists of an industrial unit and an urban plot, totaling approximately 816 m². The main building measures about 368 m² and includes a reception area, office, large storage area, changing room, and parking. . On the ground floor, you'll find the commercial space and office, with around 30 m² filled...(Ask for More Details!)