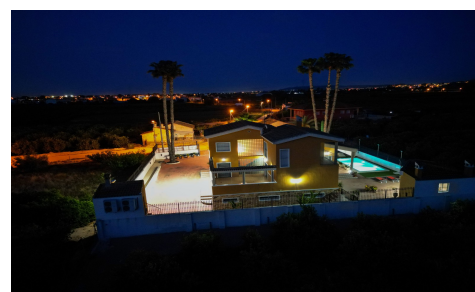


SPS75323R



Country House in Orihuela

€675,000



4



2



495m²



9,480m²



N/A

9,480 m2 fully fenced property with 495 m2 house built on a plot of 1,000 m2 all fenced within the perimeter of the property. The house consists of three floors: SEMI-BASEMENT FLOOR: 224 m2. Built Garage for several vehicles, gym with shower, entertainment room, DIY area with shelves and bench, a bedroom and a dressing room-shoe cupboard. GROUND FLOOR: 178 m2. Built Distributed in a large living room, large kitchen with access to an outdoor barbecue area, separate utility room, laundry room with access to an outdoor terrace, 1 bathroom with shower, 1 bedroom with built-in wardrobe and an office area with access to an outdoor terrace....(Ask for More Details!)