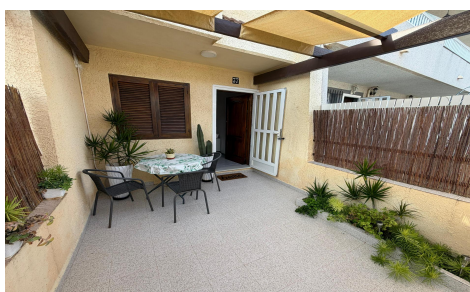
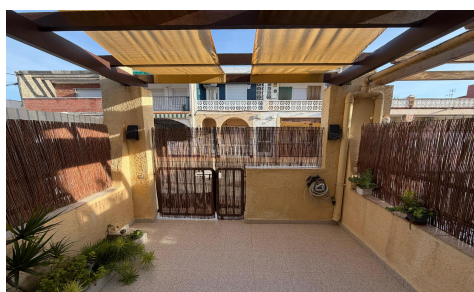


SPS18135X

Duplex in Lo Pagan

€148,470



2



2



63m²



N/A



N/A

Discover this magnificent duplex-style home located in the sought-after area of La Puntica, just 350 metres from the sea. With an attractive price of €148,470 and a floor area of 63 m², this home offers the perfect balance between comfort and accessibility. It features two spacious double bedrooms and two full bathrooms to meet the needs of a family. Among its many advantages are its excellent overall condition, a private terrace ideal for enjoying the outdoors and an additional storage room. What's more, you'll be able to enjoy natural surroundings surrounded by trees and have easy access to public transport, as...(Ask for More Details!)