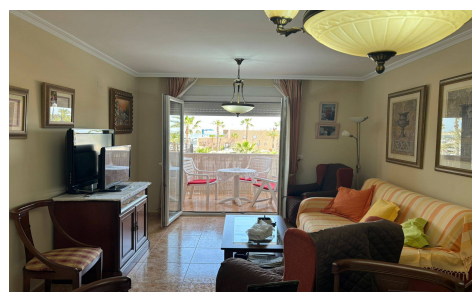
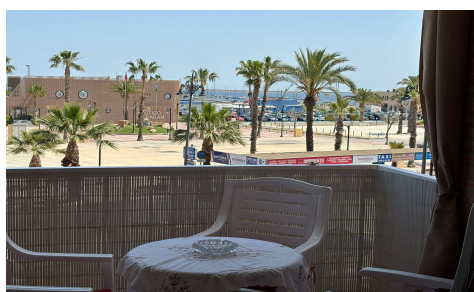


SPS58640D



## Apartment in Lo Pagan

€220,900



3



2



127m<sup>2</sup>



N/A



N/A

The location also offers numerous nearby amenities, including well-connected local buses to other major areas and essential infrastructure such as schools and hospitals, as well as shopping centers for your daily needs. There are also perfect children's play areas if you have young children. This apartment not only represents an excellent residential location but also a valuable investment due to its unique features within the current real estate market, priced at €220,900.