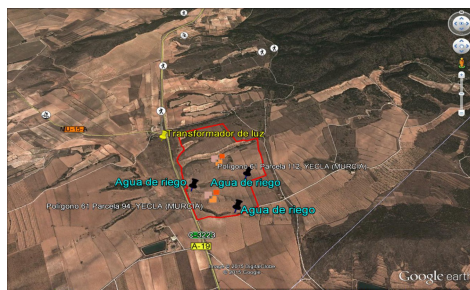


SPS85984C



## Land a Plots in Yecla

€623,000



0



0



N/A



407,580m<sup>2</sup>



N/A

Finca Las Quebradas between Pinoso and Yecla. This expansive property near the Sierra Salinas natural park in Las Quebradas (Yecla) offers an excellent investment opportunity in a peaceful, non-mining area with stunning 360° views. The land covers a total of 407,580 m<sup>2</sup>, including 82,803 m<sup>2</sup> of almond plantation, 5,589 m<sup>2</sup> of olive trees, 5,594 m<sup>2</sup> of scrubland, and 313,594 m<sup>2</sup> of tilled land suitable for growing cereals, vineyards, olive trees, almonds, or other crops. The property is building-approved and has access to electricity with a nearby transformer. Although it currently lacks drinking and irrigation water, there is potential to apply for a well permit of up to 7,000 m<sup>3</sup> for...(Ask for More Details!)