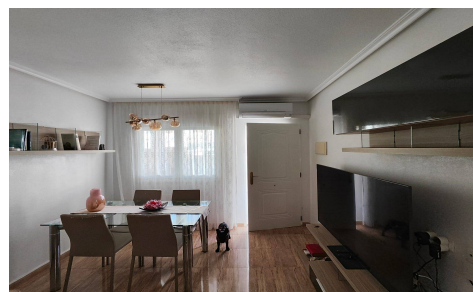
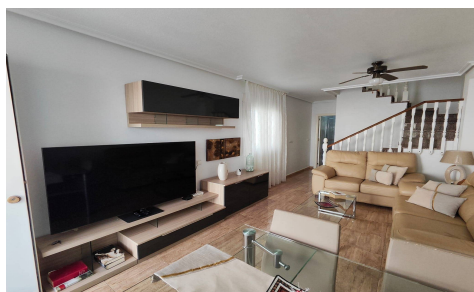




SPS70486J

Semi Detached in San Pedro del Pinatar €210,000



2



2



81m²



60m²



We present to you this charming semi-detached house, ready to move into, located in one of the most sought-after areas of the Murcian coast. With a built area of 81 m² on a 60 m² plot, this home stands out for its excellent layout, brightness, and comfort—ideal as a permanent residence or for enjoying your holidays near the sea. Just 900 meters from the beach, the property features two spacious double bedrooms and two full bathrooms, as well as a fully equipped kitchen and a cozy living area with wooden interior carpentry and tiled floors. Its north-facing orientation ensures a cool atmosphere during the warmer months, and the PVC windows...(Ask for More Details!)