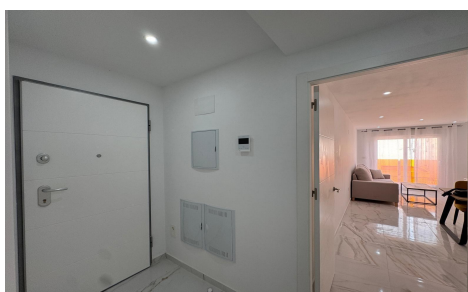
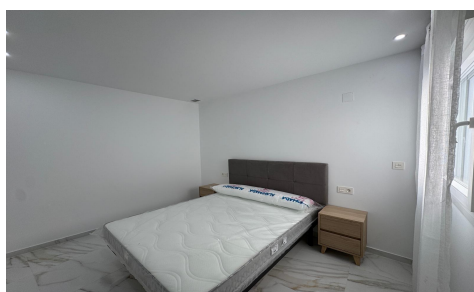




SPS89240V

Apartment in Torrevieja

€228,000



2



2



85m²



N/A



N/A

Discover this exclusive, brand-new two-bedroom apartment in the heart of Torrevieja. With a constructed area of almost 85 m², this property is located just 900 meters from the sea, allowing you to enjoy the sun and the beach at any time. The property boasts a modern and functional design, offering two full bathrooms for added convenience. It also features an impressive solarium equipped with a barbecue, ideal for gatherings with family or friends while enjoying panoramic views. The apartment is entirely exterior-facing and includes easy access to buses and shopping centers, as well as nearby schools and hospitals, ensuring everything you need is within easy reach. Contact us for more...(Ask for More Details!)