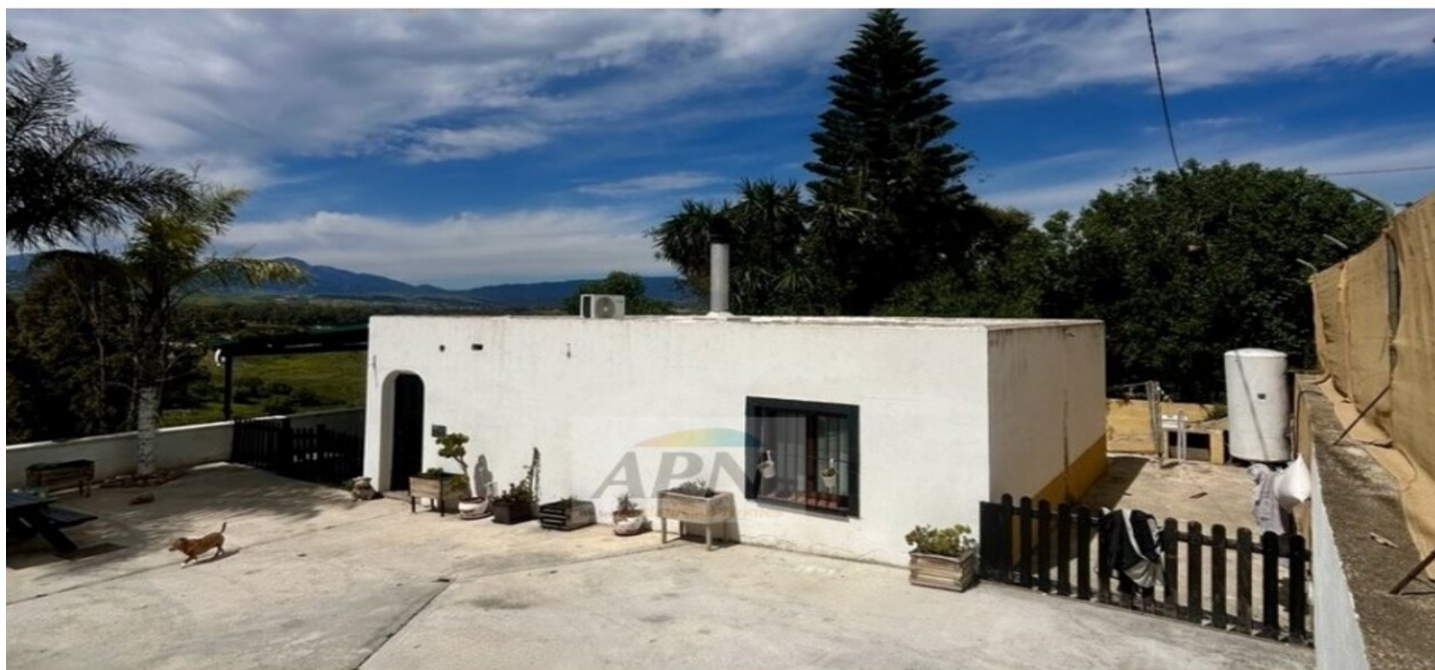


MLS95708E



Country House in Cartama

€325,000



3



3



97m²



2,514m²



N/A

Located in the peaceful countryside between Villafranco del Guadalhorce and Cartama, this well-positioned property offers privacy, accessibility, and excellent potential for rental or tourism use. With easy access to Mlaga and the coast, it combines rural charm with convenience. The main house is a single-storey home set within a fully fenced and gated plot, featuring a good sized parking area. Inside, the property offers a spacious living room and kitchen, with patio doors leading out to a generous covered terrace perfect for relaxing while enjoying open countryside views. There are two double bedrooms with storage, a bathroom and a laundry room. Beneath the terrace, you'll find stables and additional storage space....(Ask for More Details!)