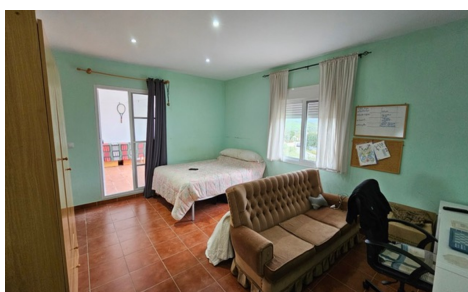
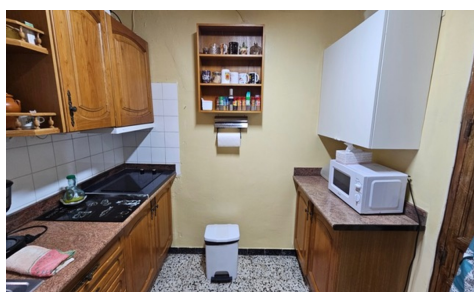




SPS85790D

Country House in Bermejo

€315,000



3



1



170m²



333m²



N/A

This property offers a good compromise between town and country living. Enjoying a semi-rural location in the hamlet of Caracuel, Bermejo, Alora, the property is built on urban land and thus enjoys all of the benefits of mains water, sewerage and electricity while still enjoying a semi-rural location. Â Built on a 333m2 urban plot and thus offering real potential for further development, the current house extends to approx. 170m2 with accommodation distributed over 2 levels. Â One enters via a covered porch to the accommodation offered on the ground floor which currently offers a reception/ sitting room which hosts a feature fireplace, a kitchen, separate dining room, 3 bedrooms, bathroom and...(Ask for More Details!)