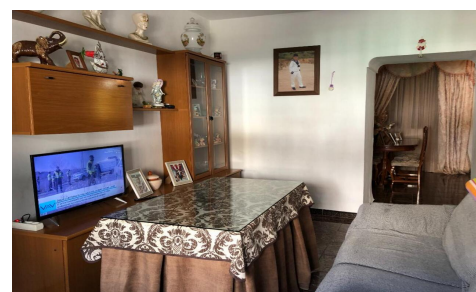
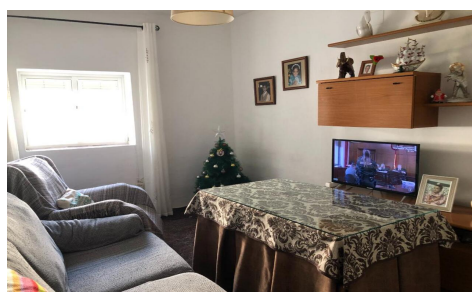
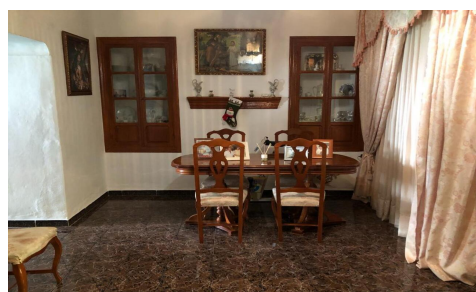




SPS32031G

Town House in Alora

€220,000



4



1



240m²



328m²



N/A

Located in a residential street just 600m from Alora train station, this property not only offers a comfortable 4 bedroom village house but because of the exceptionally large urban plot of 328m² and the fact that it enjoys access from 2 parallel streets, it also offers great development potential. The existing house has a total build size of 240m² with the main accommodation distributed over 2 levels plus semi-basement. At street level one enters into a welcoming reception room which leads through to a 2nd sitting room, dining kitchen and complete bathroom. An attractive staircase leads to the upper level which currently hosts 4 bedrooms, one of which enjoys direct... (Ask for More Details!)