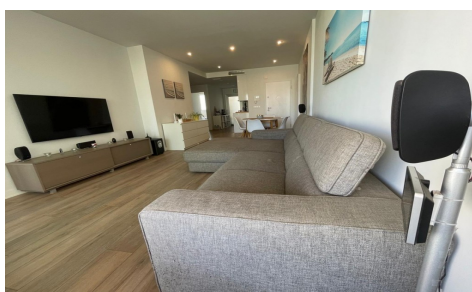
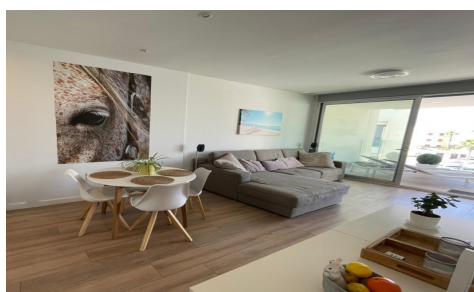


SPS11200L



Apartment in Villamartin

€279,000



2



2



94m²



N/A



N/A

Luxury 2-Bedroom Apartment in a Prime Location. Discover this stylish second-floor apartment in EMA Residencial, Villamartin, located in one of the most sought-after areas of Orihuela Costa. The apartment features 2 spacious bedrooms, 2 modern bathrooms, a bright living area with an open-plan kitchen, and large windows that flood the space with natural light. With a living area of 94 m² and a spacious southwest-facing terrace of 23 m², this property offers the perfect combination of comfort, space, and Mediterranean outdoor living. From the living room, you have direct access to the sunny terrace overlooking the beautifully maintained communal areas, an ideal place to relax and enjoy the sun until...(Ask for More Details!)