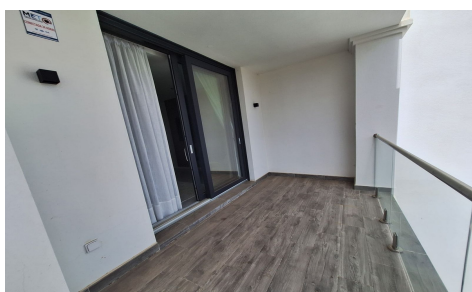


SPS70583E



Apartment in Manilva

€379,000



2



2



106m²



N/A



N/A

Modern Apartment with Sea Views and Private Terrace â€“ La Paloma Manilva, Costa del Sol This elegant apartment, measuring 105.9 m² (plus a 15.08 m² terrace), offers light, comfort, and a peaceful setting just 200 m from the beach. Located in a gated community with controlled access, it features a private covered terrace with soundproof glass enclosures and a parking space included. The home features a spacious and bright living-dining room, a fully equipped open-plan kitchen, a master bedroom with an en-suite bathroom and built-in wardrobes, a second full bathroom, and air conditioning and central heating. Its modern, open design maximizes natural light and views of the Mediterranean Sea...(Ask for More Details!)