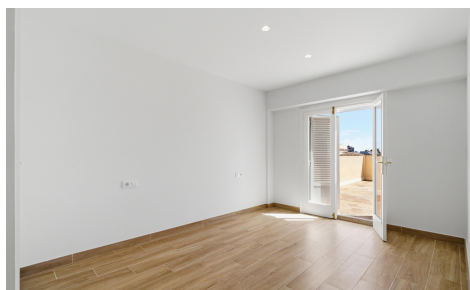


SPS92540D



## Apartment in Palma de Mallorca

€630,000



2



1



53m<sup>2</sup>



N/A



N/A

Turnkey Penthouse with Exceptional Outdoor Living at Plaza Patines Located on the top floor of this attractive building next to Plaza Patines, this charming penthouse offers 53 m<sup>2</sup> of registered living space and an impressive 47 m<sup>2</sup> of private terraces – a rare combination in the heart of Palma. The apartment has recently undergone a complete renovation and is presented in turnkey condition, featuring a new kitchen, new bathroom, new flooring, and contemporary finishes throughout, creating a bright and welcoming atmosphere. Although officially registered as 53 m<sup>2</sup>, the apartment feels considerably larger thanks to the enclosed front terrace that has been incorporated into the living area, creating additional usable space and...(Ask for More Details!)