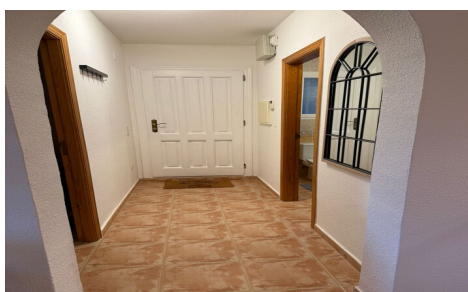


MLS64119E



Apartment in Benitachell

€235,000



2



2



N/A



N/A



Located in the beautiful and well-maintained Montecala urbanisation in Cumbre del Sol, this bright and spacious two-bedroom, two-bathroom apartment offers comfort, privacy and excellent community facilities in a peaceful Mediterranean setting. The property features a welcoming entrance leading into a light and airy living and dining area with an open-plan kitchen fitted with modern appliances. Large windows allow plenty of natural light, while double-glazed windows with mosquito nets and shutters provide comfort and practicality throughout the year. Both bedrooms are generous in size, and the apartment benefits from two bathrooms (the second bathroom is currently being used for bike storage), making the property flexible for families, visiting guests, or