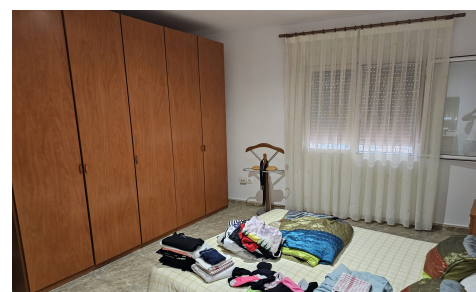


SPS92610K



Town House in Benitachell

€300,000



6



2



213m²



92m²



N/A

Located on a quiet street in the historic centre of Benitachell, this traditional townhouse offers a versatile layout with strong potential for both residential use and investment. The property has been divided into two independent apartments, each with its own private entrance, making it ideal for extended family living or rental income. Both units are similarly distributed, each comprising three bedrooms, a kitchen, a family bathroom, and a lounge, providing practical and functional living spaces. The ground floor apartment benefits from access to a small private terrace, offering an outdoor space for everyday use. The upper floor apartment features a full-length balcony across the facade, providing additional light and outdoor...(Ask for More Details!)