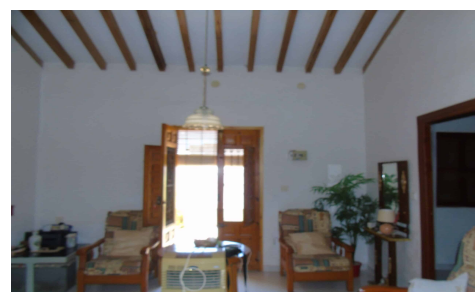


SPS73654B



**Finca in Playa Honda**

**€550,000**



3



1



N/A



6,000m<sup>2</sup>



N/A

**LOCATION:** Very peacefully and privately located, the finca is to be found just off the La Manga autovia around 1 km before Cabo de Palos and opposite Playa Honda. On the cusp of the Calblanque National Park. It has easy access to the autovia (motorway) for the beaches, Corvera airport, Cartagena and Murcia. **DESCRIPTION:** \* Plot 1 is 397m<sup>2</sup> and contains: \* 3 bedroom bungalow \* House size 107m<sup>2</sup> \* Front & rear patios \* Warehouse of 109m<sup>2</sup> \* Several outbuildings - currently used for storage \* Plot 2 is approximately 5,500m<sup>2</sup> \* Large warehouse \* Abundance of mature plants and trees \* Could be put to various uses \*...(Ask for More Details!)